

Oxequip® Med*Star® DISS Medical Gas Outlets

Elements

- Safety keyed to prevent cross-connections
- Conforms to NFPA 99 and CSA standards
- Modular design
- Cleaned for oxygen service
- UL Listed



Description

The Oxequip Diameter Index Safety System (DISS) Series outlet stations provide convenient access to medical gases in patient care locations. They are fully compatible with DISS style diameter indexed threaded adapters.

The outlets can be grouped together in any order desired by the facility. Outlets are spaced 5" (12.7 cm) center to center. Outlet finish plates and rough-in plates are pin indexed using steel pins for positive cross-connection prevention. The chrome-plated brass valve bodies contain a self-sealing poppet, and are separate from the finish plate, allowing easy testing for leaks and cross connection. Valve bodies are field adjustable to compensate for variations in plaster thickness of 12.7 mm (1/2") to 19 mm (3/4").

The 152.5 mm (6") Type K copper inlet tube has a 9.5 mm (3/8") ID (12.7 mm (1/2") OD) connection, and can rotate 360 degrees to accommodate any field piping arrangement. The primary gas check can be serviced without shutting off the gas supply.



Oxequip DISS Medical Gas Outlets

The outlet stations are fully compliant with NFPA 99 (2002) and CSA Z-305, and are cleaned for oxygen service in accordance with CGA G-4.1. The outlet is UL listed. Rough-in plates for the outlets are zinc plated steel for corrosion resistance and fire safety. Finish plates are die-cast zinc, chrome-plated with brushed stainless inserts for appearance. Gas identification is provided by a polycarbonate plastic insert, color-coded by gas service.

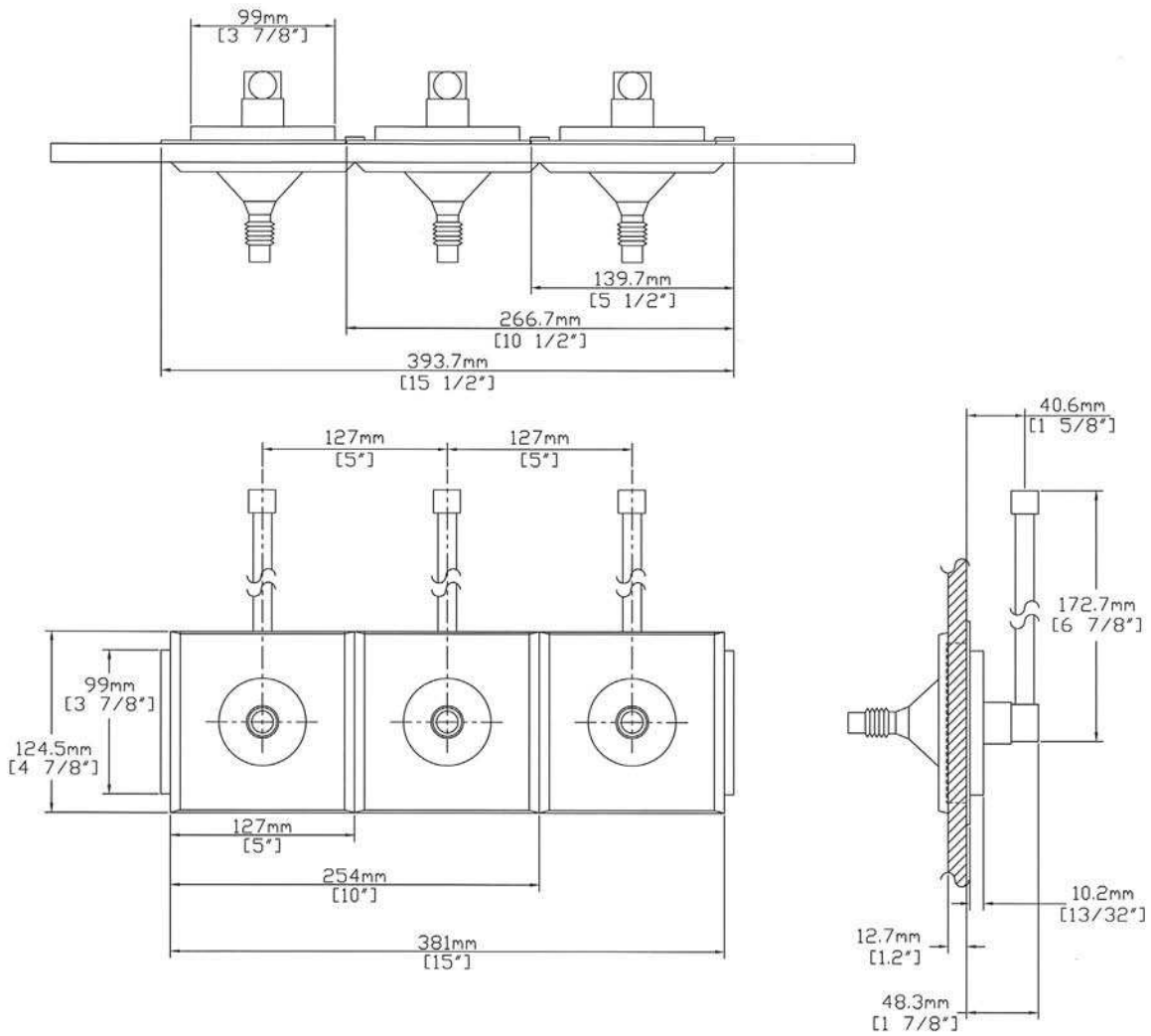
Vacuum outlets may be used with or without slide brackets for vacuum collection bottles of up to 2 liters (1/2 gallon) capacity (where slides are used, provide one per vacuum outlet).

Ordering Information

Gas Service	Catalog Number U.S. Color Codes	Quantity	Catalog Number ISO Color Codes	Quantity
Oxygen	1930-1111		1930-1121	
Vacuum	1930-1211		1930-1221	
Air	1930-1411		1930-1421	
Nitrous Oxide	1930-1311		1930-1321	
WAGD	1930-1811		1930-1821	
Carbon Dioxide	1930-1511		1930-1521	
Nitrogen	1930-1611		1930-1621	
Slide Bracket	1857-A		1857-A	

Product Specification

Dimensional Data



Refer to installation instructions prior to assembly.



*Oxequip Med*Star DISS Medical Gas Outlets*

All specifications are nominal and subject to change without notice.

Warranty
See Allied Statement of Warranties for details.

© 2005 Allied Healthcare Product, Inc.® Printed USA

Customer Service:
USA: (800) 444-3960
FAX: (314) 771-7537
Canada/ Mexico: (800) 446-0552
FAX: (800) 246-6201
International: (314) 268-1683
FAX: (314) 771-5183



1720 Sublette Avenue
St. Louis, MO 63110 USA
(314) 771-2400
www.alliedhpi.com
ISO 9001 CERTIFIED

Product Specification