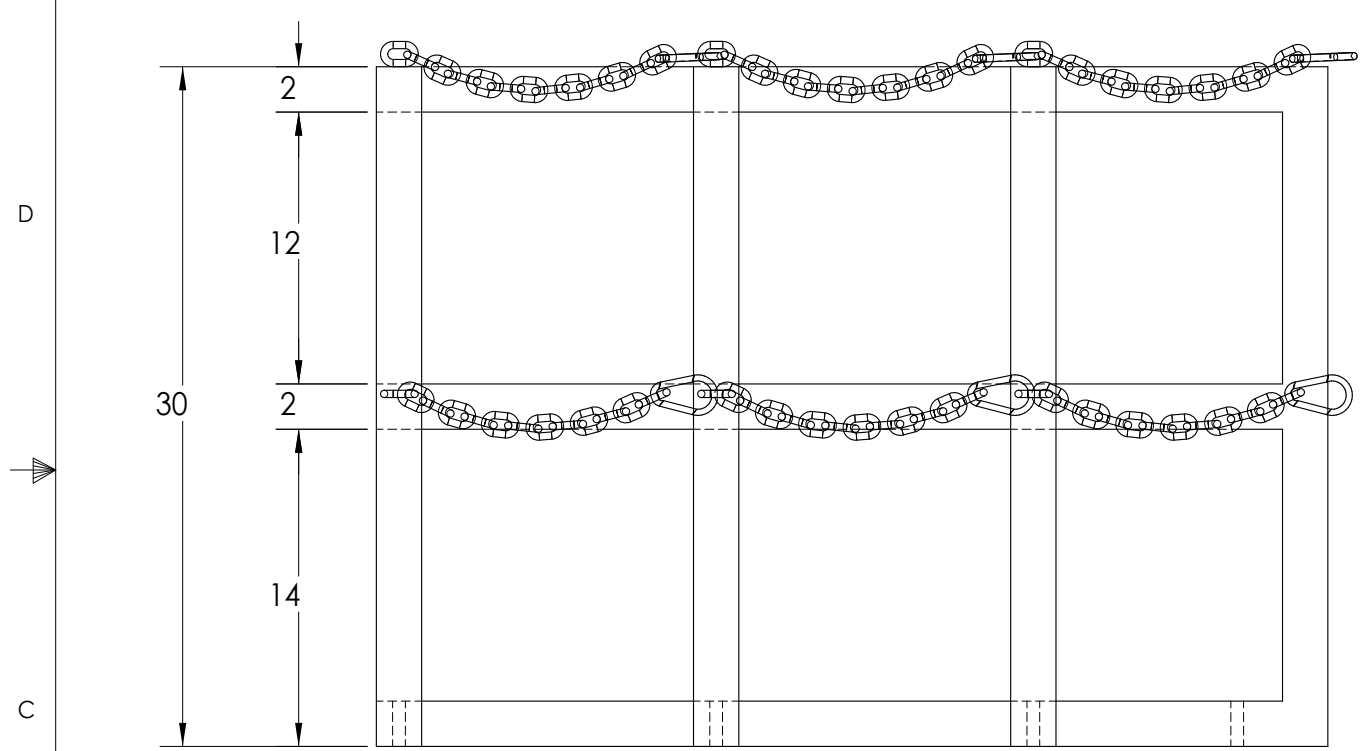
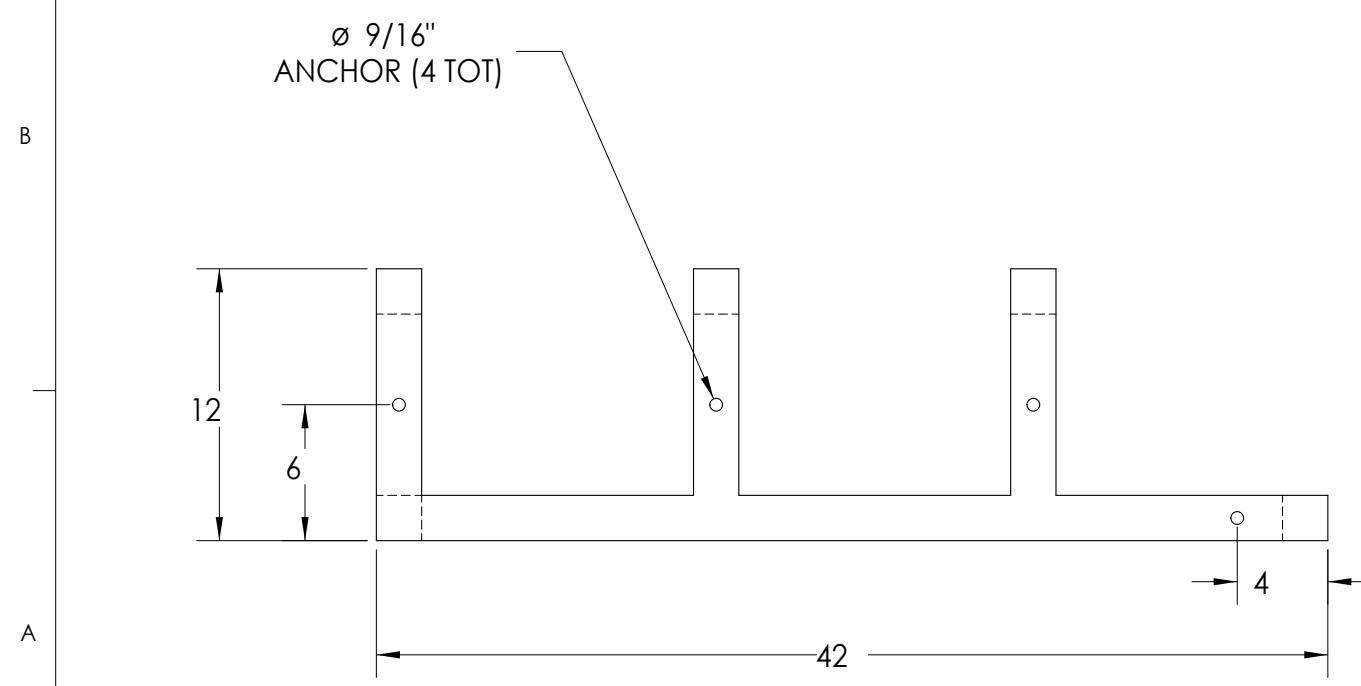


TOP



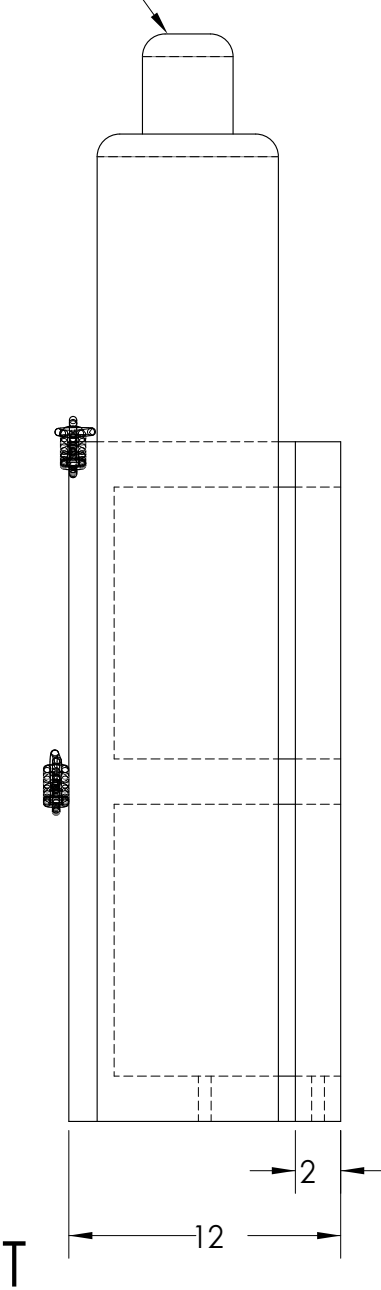
FRONT



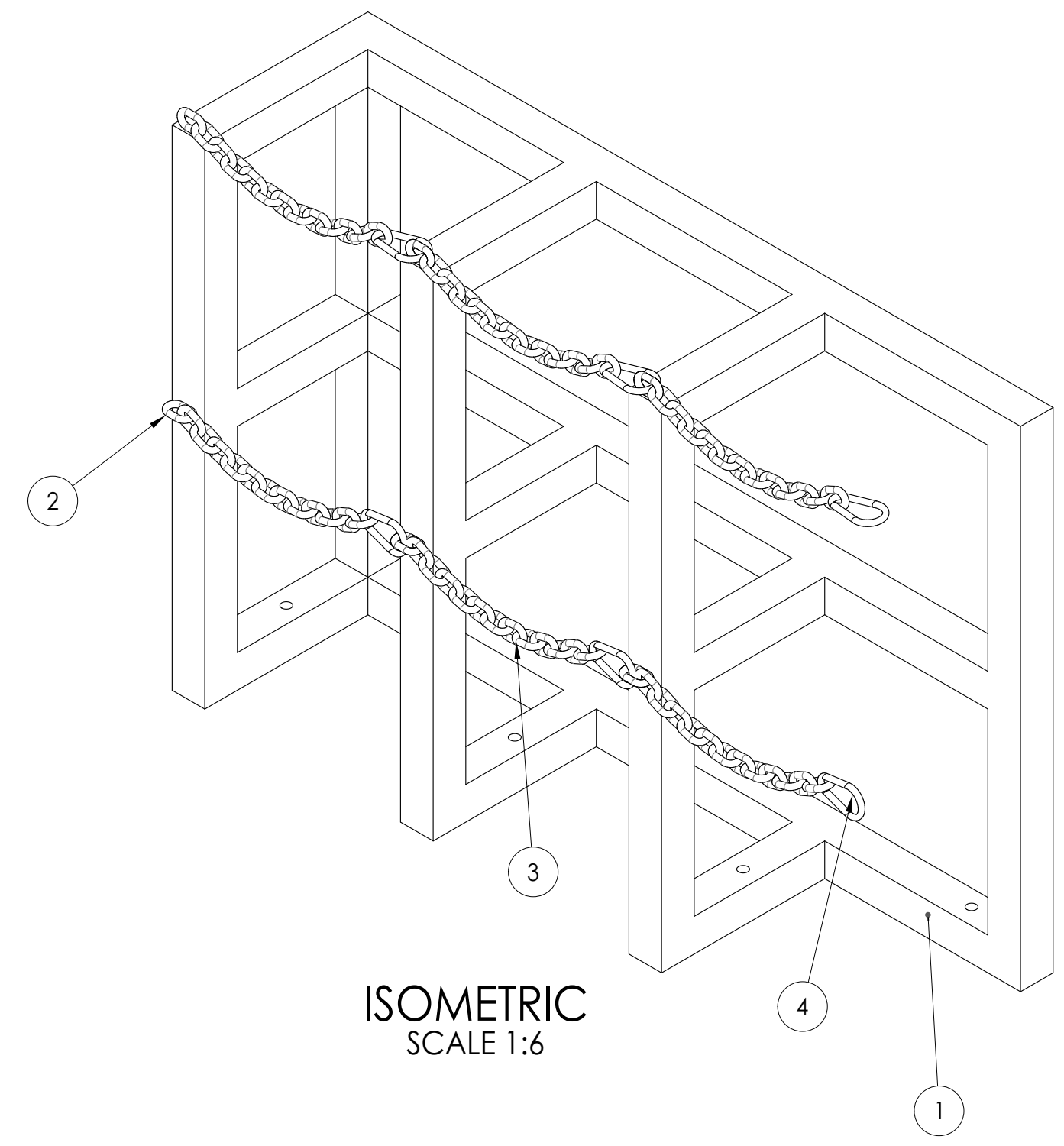
BOTTOM

NOTE: CHAINS REMOVED FOR CLARITY

TANK SHOWN FOR REFERENCE ONLY



RIGHT



ISOMETRIC SCALE 1:6

| ITEM NO. | MATERIAL | DESCRIPTION | QTY. |
|----------|---|---|------|
| 1 | HSS 2" X 2" X 1/8" | HSS STEEL FRAME CUT AND WELDED TO RACK SIZE | 1 |
| 2 | 5/16" STEEL WELDED LINK CHAIN (1,900 LBS LOAD RATING) | 5/16" SINGLE WELDED LINK WELDED TO RACK FRAME | 6 |
| 3 | 5/16" STEEL WELDED LINK CHAIN (1,900 LBS LOAD RATING) | 5/16" STEEL WELDED LINK CHAIN CUT TO SIZE | 6 |
| 4 | 5/16" STEEL CARABINER HOOK (520 LBS LOAD RATING) | 5/16" STEEL CARABINER | 6 |

PROPRIETARY AND CONFIDENTIAL
THE INFORMATION CONTAINED IN THIS DRAWING IS THE SOLE PROPERTY OF <INSERT COMPANY NAME HERE>. ANY REPRODUCTION IN PART OR AS A WHOLE WITHOUT THE WRITTEN PERMISSION OF <INSERT COMPANY NAME HERE> IS PROHIBITED.



| | | | |
|--------------------------------------|---------|----------------------|------|
| UNLESS OTHERWISE SPECIFIED: | | NAME | DATE |
| DIMENSIONS ARE IN INCHES | | | |
| TOLERANCES: | | | |
| FRACTIONAL ± | | | |
| ANGULAR: MACH ± | BEND ± | | |
| TWO PLACE DECIMAL ± | | | |
| THREE PLACE DECIMAL ± | | | |
| INTERPRET GEOMETRIC TOLERANCING PER: | | COMMENTS: | |
| MATERIAL | | | |
| FINISH | | | |
| NEXT ASSY | USED ON | | |
| APPLICATION | | DO NOT SCALE DRAWING | |

| | | |
|---------------------|---------------|--------------|
| TITLE: | | |
| MODEL 1D3W-L | | |
| SIZE | DWG. NO. | REV |
| C | 1D3W-L | |
| SCALE: 1:8 | WEIGHT: | SHEET 1 OF 1 |