

## Connect2® Quick-Connect Medical Gas Outlets

### Elements

- Accepts both Chemetron® and Ohmeda® adapters in the same outlet
- Push-button release for Chemetron adapters; Ohmeda adapters are twist-released
- Cleaned for oxygen service
- Safety keyed to help prevent cross-connections
- Conforms to NFPA and CGA
- UL and CSA approved



### Description

The Allied Connect2® medical gas outlet stations provide convenient access to medical gases in patient care locations. They accept either a Chemetron or Ohmeda adapter in the same outlet.

The outlets are field-gangable in any order desired by the facility. Outlets are spaced 5" (12.7 cm) center to center. Outlet finish plates and rough-in plates are pin indexed using steel pins for positive cross-connection prevention. Primary valves are separate from the finish plate, allowing easy testing for leaks and cross connection. Primary valves are made of brass and contain a chrome-plated self-sealing poppet. Primary valves are field-adjustable to compensate for variations in plaster thickness of 1/2" to 3/4". Outlets may be special ordered with extended valve bodies that allow for an additional 3/8" or 3/4" adjustment.

The type K copper inlet tube has a 1/2" OD connection, and can rotate 360 degrees to accommodate any field piping arrangement. The primary gas check can be serviced without shutting off the gas supply.

Finish plates consist of a stainless steel insert surrounded by a silver metallic-finish ABS high-impact decorative trim.



**Connect2 Quick-Connect Medical Gas Outlets**

The outlet stations are fully compliant with NFPA 99 1999 and CGA G-4.1. The outlet is UL listed. Finish plates consist of a stainless steel insert surrounded by a silver metallic-finish ABS high-impact decorative trim. Gas identification is provided by a polycarbonate plastic insert, color-coded by gas service, per NFPA and CGA.

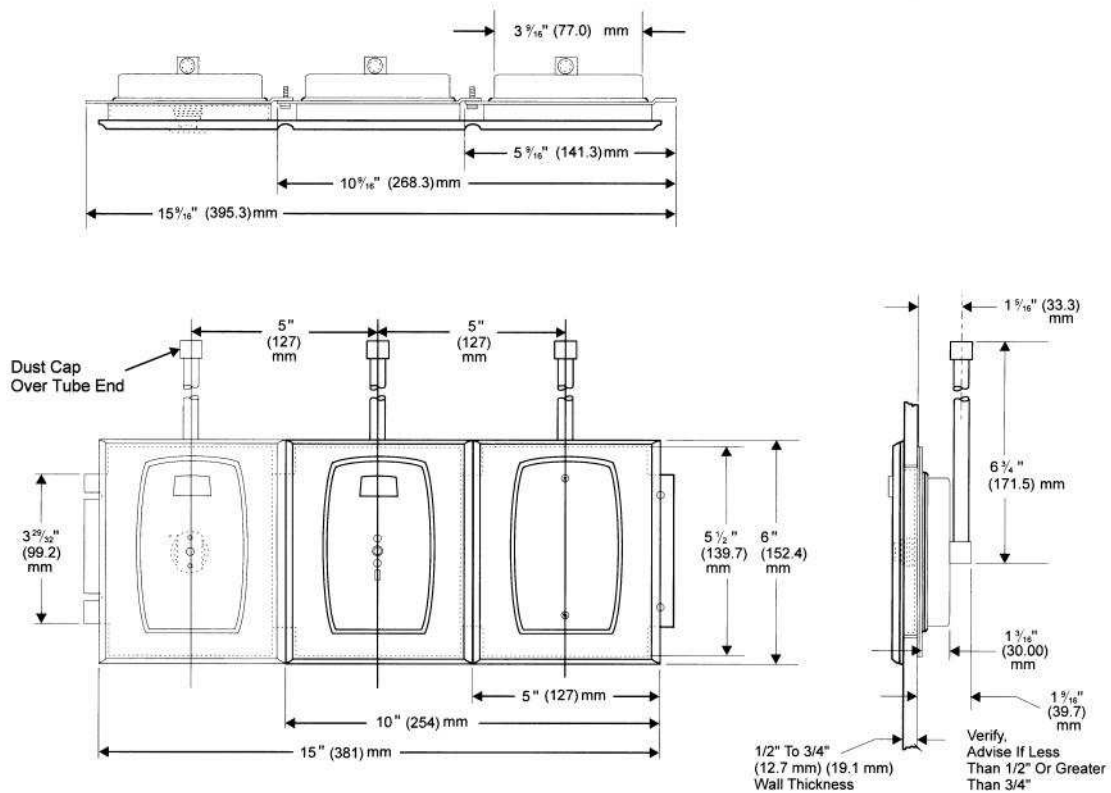
Release is easily accomplished with one hand using a push button release (or twist release for Ohmeda style adapters). The primary valve poppet provides a dust-proof seal. Vacuum outlets may be used without slide brackets for vacuum collection bottles of up to 1/2-gallon capacity.

**Ordering Information**

Gas Service	Catalog Number U.S. Color Codes	Quantity	Catalog Number ISO Color Codes	Quantity
Oxygen	64-02-5001P		64-02-5051P	
Vacuum	64-02-5002P		64-02-5052P	
Air	64-02-5003P		64-02-5053P	
Nitrous Oxide	64-02-5004P		64-02-5004P	
WAGD*	64-02-5006P		64-02-5006P	
Carbon Dioxide	64-02-5007P		64-02-5007P	
Oxygen/CO2 (CO2 less than 7%)	64-02-5008P		64-02-5058P	
Slide Bracket	64-06-0001P		64-06-0001P	

\*Waste Anesthetic Gas Disposal (formerly Evacuation)

**Dimensional Data**



**Refer to installation instructions prior to assembly.**



*Connect2 Quick-Connect Medical Gas Outlets*

All specifications are nominal and subject to change without notice.

Warranty:  
See Allied Statement of Warranties for details.

*Customer Service:*

USA: (800) 444-3960  
FAX: (314) 771-7537  
Canada/Mexico: (800) 446-0552  
FAX: (800) 246-6201  
International: (314) 268-1683  
FAX: (314) 771-5183



1720 Sublette Avenue  
St. Louis, MO 63110 USA  
(314) 771-2400  
[www.alliedhpi.com](http://www.alliedhpi.com)  
**ISO 9001 & 13485  
CERTIFIED**

© 2007 Allied Healthcare Products, Inc.® Printed in USA

*Product Specification*